

RCA

USER'S GUIDE



LYRA²



www.LyraZone.com

RD2209

Important Safety Information

Be sure to read all the safety information before you begin to use this product.

IMPORTANT NOTE: To reduce the risk of fire or shock hazard, do not expose this player to rain or moisture.

<p>CAUTION</p> <p>RISK OF ELECTRIC SHOCK DO NOT OPEN</p>		<p>This symbol indicates "dangerous voltage" inside the product that presents a risk of electric shock or personal injury.</p>
<p>ATTENTION</p> <p>RISQUE DE CHOC ELECTRIQUE NE PAS OUVRIR</p>		<p>This symbol indicates important instructions accompanying the product.</p>

TO REDUCE THE RISK OF ELECTRIC SHOCK, DO NOT REMOVE THE COVER (OR BACK). NO USER-SERVICEABLE PARTS ARE INSIDE. REFER SERVICING TO QUALIFIED SERVICE PERSONNEL.

FEDERAL COMMUNICATIONS COMMISSION INFORMATION

This device complies with Part 15 of the FCC Rules. Operation is subject to the following two conditions: (1) This device may not cause harmful interference, and (2) This device must accept any interference received, including interference that may cause undesired operation.

Note: This equipment has been tested and found to comply with the limits for a Class B digital device, pursuant to part 15 of the FCC rules. These limits are designed to provide reasonable protection against harmful interference in a residential installation. This equipment generates, uses and can radiate radio frequency energy and, if not installed and used in accordance with the instructions, may cause harmful interference to radio communications. However, there is no guarantee that interference will not occur in a particular installation. If this equipment does cause harmful interference to radio or television reception, which can be determined by turning the equipment off or on, the user is encouraged to try to correct the interference by one or more of the following measures:

- Reorient or relocate the receiving antenna.
- Increase the separation between the equipment and the receiver.
- Connect the equipment into an outlet on a circuit different from that to which the receiver is connected.
- Consult the dealer or an experienced Radio/TV technician for help.

This Class B digital apparatus complies with Canadian ICES-003.

SERVICE

This product should be serviced only by those specially trained in appropriate servicing techniques. For instructions on how to obtain service, refer to the warranty in this guide. Attach your sales receipt for future reference, or write down the date you purchased or received this product as a gift. This information will be valuable if service should be required during the warranty period.

Model No: RD 2209
 Serial No: _____
 Purchase Date: _____
 Purchased From: _____

Introduction

Your LYRA2 personal digital player is designed to give you hours of listening pleasure. To get the most out of your new purchase, we suggest that you take a few minutes right now to read through this instruction manual.

If you have any questions or problems, consult the Troubleshooting Guide or visit www.lyrazone.com for help and recent updates.

Table of Contents

Important Information3	Learn the Basic Controls14
Warnings about Copyright Laws3	Save CD Tracks to Play on Your PC or LYRA2 Player15
Caution While Driving3	Download Music From the Internet16
Precautions for CompactFlash Card3	Use MusicMatch Jukebox to Play Net Radio on your PC17
Computer System Requirements4	Organize the Music Library18
Getting Started5	Create a Playlist for Playing or Downloading	19
Unpack the Player and Accessories5	Edit Tags for Your Songs20
Insert the Included Software CD into Your CD-ROM Drive6	Transfer the Audio Files to the CompactFlash Card21
Install the CompactFlash* Drivers6	Install the RealJukebox*** Software23
Connect the CompactFlash External Drive7	Set Basic Preferences24
Install the Music Management Software8	Learn the RealJukebox Basic Controls26
Install the MusicMatch Jukebox** Software	9	Save CD Tracks to Play on Your PC or LYRA2 Player26
Set MusicMatch Jukebox Basic Preferences10	Download Music From the Internet28

* CompactFlash is a trademark of SanDisk Corporation
 ** MusicMatch Jukebox is a registered trademark of MusicMatch Corporation
 *** G2, RealJukebox and RealNetworks are trademarks of Real Networks, Inc.

Table of Contents

Organize the Playlist	29	Mode Menu	45
Create a Playlist for Playing or downloading	29	Repeat and Shuffle Features	45
Create an Auto-Playlist	30	Program Feature	45
Searching for Tracks	30	To Clear Program from Memory	46
Radio	31	DSP (Digital Signal Processor) Menu	47
Transfer the Audio Files to the CompactFlash Card	32	DSP Modes	47
Install the LYRA2 User's Guide and Documentation	34	Equalizer Feature	47
Insert the Alkaline Batteries Into the Player	35	Radio Mode	48
Insert the CompactFlash Card In the Player	36	Search Features	48
Attach the Headphones to the Player	36	Preset Memory	48
Player Features	37	Memory Recall	49
Controls	38	Delete Preset Memory	49
Remote Control	40	Suppressing Stereo Signal	49
Playing a CompactFlash Card	41	DSP (Digital Signal Processor)	49
Playback Features	43	Stop Feature	49
Pause Feature	43	Included Accessories	50
Auto Resume Feature	43	CompactFlash Memory Cards	50
Skip and Search Features	44	Removable Belt Clip	50
Scroll Feature	44	Optional Accessories	51
		Specifications	53
		Troubleshooting Guide	54
		Limited Warranty	55
		Index	58

Important Information

EN

The LYRA2 player works with your computer to let you play your favorite music from files recorded on removable CompactFlash cards. The player plays files encoded with the popular MP3, Windows Media* Audio and RealNetworks** G2 audio formats and may allow for future upgrades of some alternative audio compression formats.

Because the player has no moving parts, the audio can be played back virtually anywhere without skipping.

You can download MP3, Windows Media and G2 encoded music files from several Internet sites to your computer hard drive or record your favorite CD using the software supplied.

Some of the Internet sites you may want to explore are:

- www.emusic.com
- www.real.com
- www.musicmatch.com
- www.mpeg.org
- www.mp3.com
- www.windowsmedia.com

Warning: Use of this product is for your personal use only. Copying CDs or downloading music files for sale or other business purposes is a violation of copyright law. It is also a violation of copyright law to download files without permission of the copyright owner.

Caution While Driving: Use of headphones while operating an automobile or moving vehicle is not recommended and is unlawful in some states and areas. Be careful and attentive on the road. Stop operation of the unit if you find it disruptive or distracting while driving.

Caution: Exposure to direct sunlight or extreme heat (such as inside a parked car) may cause damage or malfunction.

- Precautions for CompactFlash Card:**
- Use a soft dry cloth to clean any dirt.
 - Do not bend CompactFlash Card.
 - Do not operate or store CompactFlash Card in places with frequent static electricity as recorded data may be damaged.
 - It is normal for CompactFlash card to get warm after being used for a long time.
 - Do not store CompactFlash card near fire, places with high temperature/ humidity or places with direct sunlight.

* Windows Media and the Windows Logo are trademarks or registered trademarks of Microsoft Corporation in the United States and/or other countries.

**G2, RealJukebox, and RealNetworks are trademarks of RealNetworks, Inc.

Important Information

Computer System Requirements

Minimum

- Pentium 166 MHz or faster
- 32MB RAM
- Windows* 98 , Windows ME or Windows 2000
(Parallel Port also available for Windows 95)
- 45 MB free hard disk space plus 1 MB for every minute of CD quality music you store on your hard drive
- CD-ROM Drive
- USB Port
- Full Duplex Sound Card

Optimum

- Pentium II 300 MHz or higher
- 64 MB RAM
- Windows 98SE, Windows ME or Windows 2000
- 50 MB free hard disk space plus 1 MB for every minute of CD quality music you store on your hard drive
- CD-ROM Drive
- USB Port
- Full Duplex Sound Card
- Internet Explorer 4.0 or more with latest access

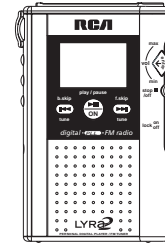
* Windows and Microsoft are registered trademarks of Microsoft Corporation in the United States and/or other countries.

Getting Started

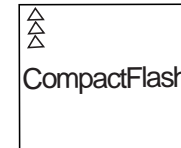
1. Unpack the player and accessories.

EN

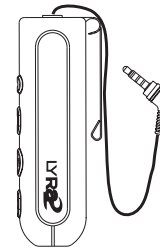
When you unpack your new player, be sure you have removed all the accessories and information papers. The items shown below are packed with your player.



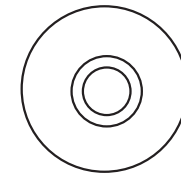
Multi-Media Player
with Removable Belt Clip



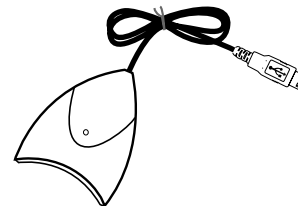
CompactFlash
Removable Memory Card



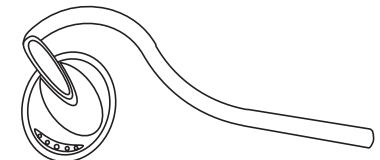
Remote Control



Software CD



External Drive for CompactFlash Card



Headphones

Getting Started

2. Insert the included software CD into your CD-ROM drive.

Use the software setup program on the included CD to install the CompactFlash drivers, Music Management software, and User's guide and documentation.

A. Turn on your computer and insert the software CD. The LYRA2 Software Setup program will automatically run.

Note: If the setup screen does not appear, double click *My Computer*, double click your CD-ROM drive icon, and double click *setup.exe*. You can also click **Start**, **Run**, then type *D:\setup.exe* (where D is the letter of your CD-ROM drive).

B. Select *Lyra2* from *Choose Player* Dialog.



C. Click *OK* to display the *Welcome Dialog*.



D. Click *Next* to display the *Select Components* screen.



3. Install the CompactFlash drivers.

A. Click the *Install CompactFlash Driver* icon to display the *Select CompactFlash Device* screen



B. Click *Install* and follow the onscreen instructions to install the USB drivers for the USB external drive included with your LYRA2 player.

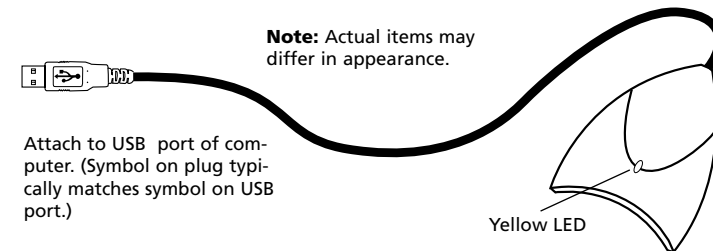
Note: If you wish to install parallel port drivers, click *Select* and choose the type of drivers you wish to install.

C. **Restart your computer.**

Getting Started

4. Connect the CompactFlash external drive.

The external drive allows you to transfer MP3, Windows Media audio, or G2 files to the CompactFlash card. The drivers for this drive must be installed first so Windows can find them when you connect the external drive.



A. Make sure you have installed the USB drivers and that your computer has been restarted.

B. Once the computer has been restarted, connect the CompactFlash external drive to an available USB port of your computer *as shown above*.

C. Windows will automatically install the drivers for the CompactFlash drive after you connect it.

Note: Consult your computer or device's owner manual for USB port specifications and troubleshooting.

5. Install the music management software.

MusicMatch Jukebox and RealJukebox software are both on the CD. We recommend MusicMatch Jukebox for ease of use and functionality. Both software programs operate as players on your PC, compress CDs to MP3 format, download files from the Internet, and transfer the files to a CompactFlash card you can play on your LYRA2 player. Download MP3 and Windows Media audio formats to the player with the MusicMatch Jukebox software. Download MP3 and G2 formats to the player with the RealJukebox software. Install one or both of these programs.

Note: LYRA2 player specific updates are available at <http://www.Lyrazone.com/downloads.html>. MusicMatch system requirements for the download are 166 MHz processor or better, Windows 95 / 98 / NT / 2000, 16 MB RAM (32 for NT), 30 MB hard drive, SVGA or higher resolution monitor, 4x CD-ROM drive, mouse, keyboard, SoundBlaster compatible card, speakers, video card and installation of Microsoft's Media Player 6.4 for video.

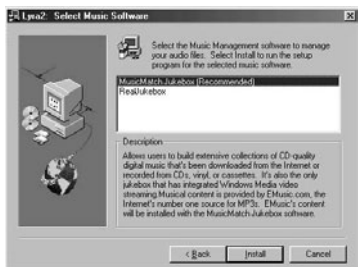
Getting Started

5. Install the music management software. (continued)

A. Insert the LYRA2 software disc into your CD-ROM drive. Follow the directions under Step 2 to display the *Select Components* screen.



B. Click the *Install the Music Management Software* icon to display the *Select Music Software* screen.



C. Select the software you want to install and click *Install*.

- Select *MusicMatch Jukebox (Recommended)* to install the MusicMatch Jukebox software. MusicMatch Jukebox is capable of MP3, WAV, and Windows Media audio format compression. Musical content is provided by EMusic.com*, the Internet's number one source for MP3s. EMusic's content will be installed with the MusicMatch Jukebox software.

Go to Step 6.

- Select *RealJukebox* to install the RealJukebox software. RealJukebox is capable of MP3, wave, and G2 compression.

Go to Step 7.

*EMusic.com, the EMusic.com Logo and other proprietary names of EMusic.com are trademarks of EMusic.com Inc.

Getting Started

6. Install the MusicMatch Jukebox™ software.

A. Display the *Select Music Software* screen as described in Step 5.

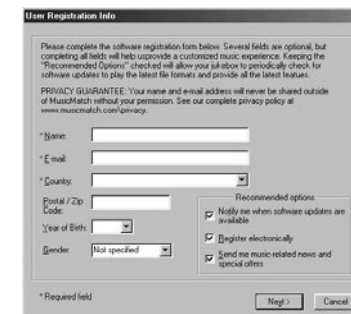
Make sure *MusicMatch Jukebox* is highlighted and click *Install*.

QUICKSTART screen will appear after installation has started. Click on *Install MusicMatch Jukebox 5.1*.



Click Yes to accept or No to decline after you have read the license agreement. You must click Yes to continue.

When the next screen appears, enter your Name, Email address, Postal code, Country, Year of Birth, and sex (Male or Female).



Notes: Enter an Email address or *yourname@home.com* if you don't have email. You must enter an email address to proceed.

If you do not want to be informed of program updates or receive news and offers via email, uncheck the boxes.

B. Click *Next* to display *Personalize Net Music* screen.

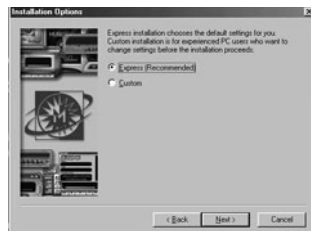


Read the screen and decide if you would like to enable the *PERSONALIZE NET MUSIC* feature. Select Yes or No. This setting can be changed later.

Getting Started

Install the MusicMatch Jukebox™ software. (continued)

C. Click Next to display *Installation Options* dialog. Select the installation option you wish to use. Express Setup is recommended. Click Next to continue.



D. After the installation is complete, click Finish to complete setup.



If necessary, close the main setup screen.

You may need to restart your web browser. Reboot your computer if any other software was installed specifically USB compact flash drivers.

Set MusicMatch Jukebox basic preferences.

Detailed information, *Welcome Tips*, and troubleshooting are available through the Help menu and the MusicMatch Internet site (accessed from the Help and Sites menus). We recommend you familiarize yourself with the *MusicMatch Welcome Tips* and view the *Online FAQ's* before using and recording files. Logging onto the Internet while using MusicMatch Jukebox takes advantage of all its features.

We feel a few of the *Recording Settings* options need to be discussed before you start using *the MusicMatch Jukebox* software.

Getting Started

Set MusicMatch Jukebox basic preferences. (continued)

A. Start the MusicMatch Jukebox software.



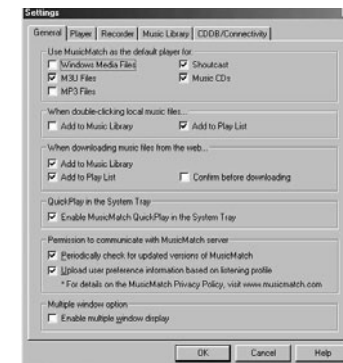
B. The *Search for Music* screen appears asking if you want the program to search for existing compatible music files.



Click OK, to have the files found appear in the *Music Library*.

C. Display the *Settings* menu by choosing Settings under the Options menu.

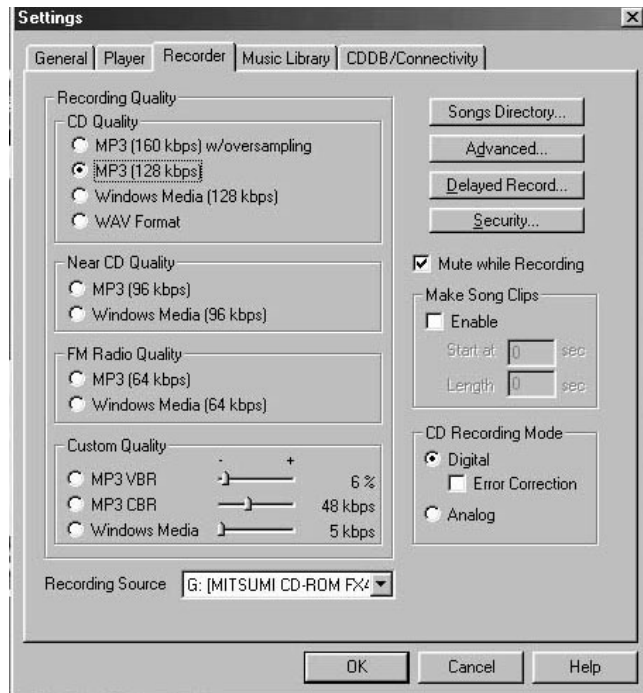
Note: You can access the Options menu at almost any time by pressing the right mouse button.



Getting Started

Set MusicMatch Jukebox basic preferences. (continued)

D. Click the *Recorder* tab to display the *Recorder* settings.



E. Select the recording *Quality* level. *CD Quality MP3 (128Kbps)* is the recommended quality level.

MP3 and *Windows Media* formats are supported by MusicMatch Jukebox for the LYRA2 player.

- *MP3* audio is MPEG Layer-3 Audio available at various encoding bit rate. The highest bit rate has the best quality sound, but uses the most disk space.

Getting Started

Set MusicMatch Jukebox basic preferences. (continued)

- *Windows Media audio* is a compression format created by Microsoft. This audio format incorporates digital rights management.

- *WAV* audio is unencoded music that is not compressed. This format has the best quality sound but requires the largest file size, as much as 650MB per CD. *WAV* audio files are much larger than *MP3* audio files.

G. Select a default *Recording Source*. If you have more than one recording source, select the source you record from the most.

H. *Mute while Recording*. This feature allows you to mute the audio while it is being recorded. Uncheck this box to hear the audio as it is recorded.

Note: This is not recommended as it will decrease the recording speed.

Note: *Custom Quality* settings are for advanced users only.

F. Select a *CD Recording Mode*.

1. Check *Digital* and *Error Correction* for the best results. Error checking and correction will be performed while you are recording.

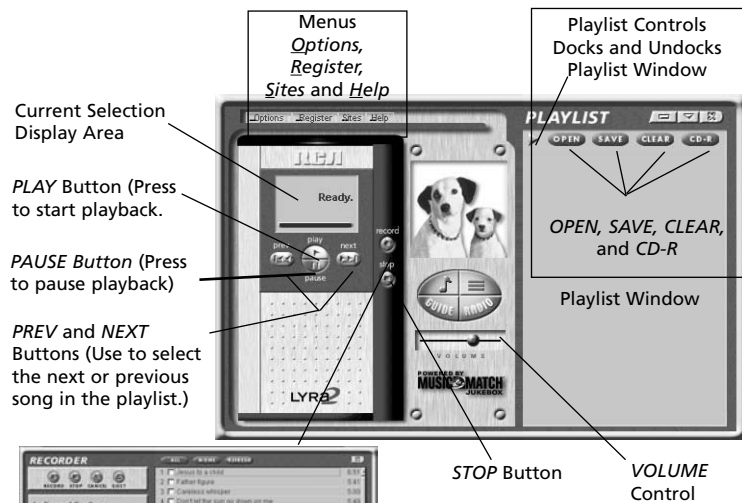
Note: Choosing *Error Correction* will slow down your recording speed.

2. Check *Analog* if your CD-ROM drive does not support digital audio extraction.

Getting Started

Learn the MusicMatch Jukebox basic controls.

Listed below are the basic functions of the main controls for the program.



Displays the Recorder Window



Displays the Music Library Window



Displays the Track Info Window



Displays the Music Guide Window



Displays the Radio Window

Note: These secondary display windows normally attach to the lowest open window. You may need to close, move, or open windows to view them.

Getting Started

Save CD tracks to play on your PC or in your LYRA2 player.

EN

A. Insert a CD into your CD-ROM drive. If you are connected to the Internet, MusicMatch Jukebox will retrieve information about the CD in the CD-ROM drive.

If you are on a LAN system and the titling feature does not work, contact your administrator.

Make sure the *Enable CDDB CD lookup service* is selected on the *CDDB Preferences* page if you are able to make a connection to the Internet. Choose *CDDB Preferences* from *Settings* in the *Options* menu.



B. The information from the Internet appears.



If the information cannot be retrieved from the Internet, enter it manually. You can enter information or edit existing information by clicking in the desired box and typing.

Important Note: If the information is not entered before recording, default song names and information will be used.

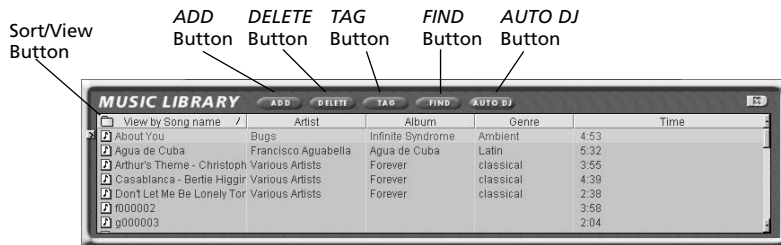
Getting Started

Organize the Music Library.

You can choose how to view your music library. You can select as many as seven categories to display at one time.

A. Click the *Music Library* button from the *Main* window to display the *Music Library* window.

Note: you can also select *Show Music Library* from *View* in the *Options* menu.



Music Library Window

B. Setup the *Music Library* for your preferences. Select *Music Library* from *Settings* in the *Options* menu to display the *Music Library Settings* screen.



Select the number of columns and type of information you want displayed in each, and then click *OK*.

C. The *Music Library* now displays your selections. To sort by categories click on the folder icon (sort/view button) in the *Music Library* window. To select how you want to view your songs.



D. To add a track from your *Music Library* to your playlist, either double click it or drag and drop it.

Getting Started

Create a playlist for playing or downloading.

To create a playlist, you can drag and drop files from your *Music Library* or you can open an existing playlist.



Music Library Window

A. To manually add tracks to the playlist, double click the track or drag and drop the track from the *Music Library* into the playlist display.

To play a track before adding it to the playlist, click next to the desired track in the *Music Library* window.

Note: Click to select a song, *Shift* and click to select groups of songs, or *Ctrl* and click to select multiple songs.

B. Click *OPEN* to open an existing playlist, browse for tracks from a specific group, or play an audio CD.

C. To clear an entire playlist from the playlist window, click *CLEAR*.

D. To save your current playlist, click *SAVE*. When the window appears, enter a playlist name and click *Save*.

Getting Started

Create a Playlist for playing or downloading. (continued)

E. To remove a single track from the playlist, click on the track to highlight it, and then press *Delete* on the keyboard.

F. Click *Play* to play the songs from the playlist. You can also double click the song in the playlist to begin playing.

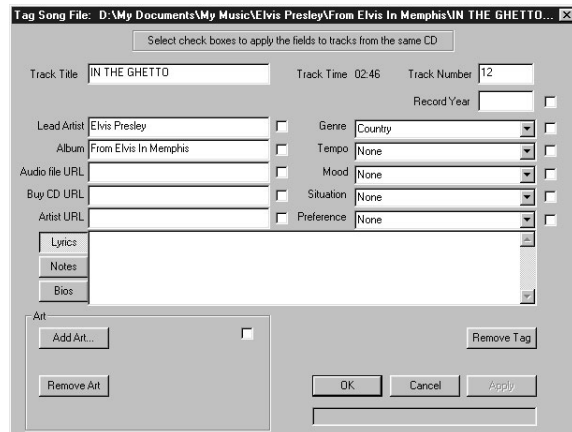
Edit Tags for Your Songs

You can edit or delete the tags for the tracks in your *Music Library*. If you delete the track's tag, all of the information about the track will be deleted.



A. Highlight the track in the *Music Library* and click the *Tag* button to display the *Tag Song File* window.

Note: Right click on the highlighted track to display a menu. Select *Edit Track Tag* to display the *Tag Song File* window.



B. You can edit the tag with your personal preferences for each of the tracks in your *Music Library*.

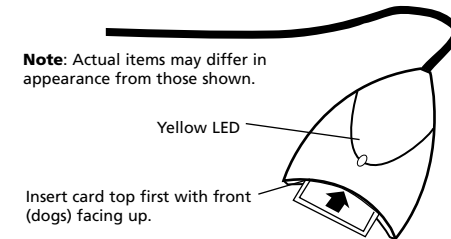
Getting Started

Transfer the audio files to the CompactFlash Card.

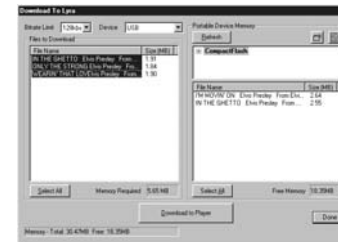
Use MusicMatch Jukebox to transfer music files to the CompactFlash card for the LYRA2 player. Make sure the external drive is installed properly and the CompactFlash card is inserted.

Important Note

Removing the card before the data is completely written may cause loss of the entire contents of the card and damage the card.



A. Choose *Options, Send to Device, Download Playlist to Lyra* to display the *Download To Lyra* window.



B. Make sure *Compact Flash* is listed in the *Portable Device Memory* area.

Note: If it is not listed, check all connections, click the *Refresh* button to refresh the portable device memory list, make sure the CompactFlash card is properly inserted in the drive, restart your computer, and consult online troubleshooting for possible causes.

C. Double click *Compact Flash* to see what is recorded on the flash card.

D. Select the desired path for the files. If you would like to create new directories for your music, click to add a directory. Make sure the correct folder is highlighted before you start downloading.

E. Select and highlight the tracks you want to download to the CompactFlash card in the *Files To Download* area.

Notes: If you remove and reinsert the card, press *Refresh* to refresh the *Portable Device Memory* list.

Click to select a song, *Shift* and click to select groups of songs, or *Ctrl* and click to select multiple songs.

Getting Started

Transfer the audio files to the CompactFlash Card. (continued)

F. After you have selected all of the music you want to record on the CompactFlash card, click the **Download** button on the bottom of the screen.

File size and availability are listed in the status and window displays.

Caution

The yellow LED on the CompactFlash external drive turns bright yellow when files are being written to the CompactFlash Card.

After the yellow light dims, wait at least 5 seconds before removing the card from the external hard drive.

Removing the card before the data is completely written may cause loss of the entire contents of the card and damage the card.

Note: Transfer all your MP3 or Windows Media audio files in groups to prevent reloading the appropriate driver for each type and compression ratio.

Note

MP3 files transferred to the CompactFlash card using Lyra compatible software are converted to an encrypted form for purposes of copyright protection, but the encryption process does not change the MP3 encoding characteristics of the file or the file's compliance with the MPEG-1, Layer 3 (MP3) standard. Additionally, the original file is left unaffected on the user's system.

G. Click **Done** when you are finished.

H. Click **Exit** under **File** in the **Options** menu to close MusicMatch Jukebox.

I. Pull the card out to remove it from the external drive.

J. *Skip to page 34, Step 8* if you do not want to install the Real Jukebox software.

Information for installing the RealJukebox software starts on *the next page*.

Helpful Hints

For detailed information on CompactFlash card file management, creating playlists, and grouping management, please consult the online documentation or **Help** section.

The external drive can also be used to transfer files from digital cameras using CompactFlash cards to the PC or store files from the PC on CompactFlash cards.

Getting Started

7. Install the RealJukebox software.

After you have installed the external drive and placed the LYRA2 software CD in the CD-ROM drive as described on pages 6-8, follow these directions to install the **RealJukebox** software.

A. Display the **Select Music Software** screen as described in Step 5.

Make sure **RealJukebox** is highlighted and click **Install**.

B. Click **Accept** or **Cancel** after you read the license agreement.

Note: You must **Accept** to continue.

C. When the **Setup of RealJukebox** screen appears, verify the correct destination path for the program files.



Click **Next**.

D. Select how to configure shortcuts for RealJukebox and click **Finish** to start installation of the software.



E. Once the RealJukebox software has started, complete the **Electronic Registration Card**. Enter your **Country** and **Zip Code**. Click **Next** to proceed.



Note: If you don't have email, enter `yourname@home.com`. You must enter an email address to proceed.

F. **Read Information about RealJukebox** window appears. Click **Tell Me More** for more information or click **Next** to continue.

G. **Setup Options** screen. Select the setup option you wish to use. **Express Setup** is recommended. Click **Next** to continue.

H. **Confirm Express Setup** screen. These screens will give a summary of the most common and default configuration settings. You can change the settings or click **Finish**.

We suggest you click **Finish and not change any of the settings at this time.**

I. If necessary, close the main setup screen.

Note: You can access the **Configuration Wizard** from the **Tools** menu at any time later when you are more familiar with the program.

Getting Started

Set basic preferences.

Detailed information, tutorials, and troubleshooting are available through the *Help* menu and the RealJukebox Internet site (accessed from the *Help* and *Sites* menus).

Note: We recommend you familiarize yourself with the *RealJukebox New User's Guide* and complete the *Online Tutorial* before using and recording files.

We also recommend that you log onto the Internet while using RealJukebox to take advantage of all the features.

We feel the *Recording Method* and a few of the *Audio Quality Preferences* need to be discussed before you start using the *RealJukebox* software.

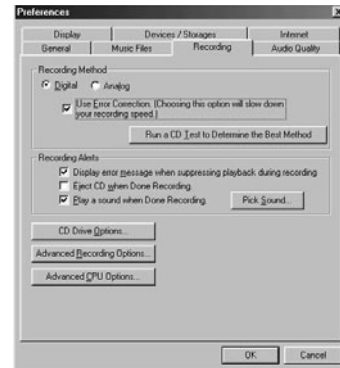
A. Start the *RealJukebox* software.



B. Display the *Preferences* menu by choosing *Preferences* under the *Tools* menu.



C. Click *Recording* to display the *Recording* menu.



D. Select a recording method.

1. Check *Digital* and *Use Error Correction* for the best results. Error checking and correction will be performed while you are recording.

Note: Choosing *Use Error Correction* will slow down your recording speed.

Getting Started

Set basic preferences. (continued)

2. Check *Analog* if your CD-ROM drive does not support digital audio extraction.

E. With the *Preferences* menu displayed, click *Audio Quality* to display the *Audio Quality* menu.



F. Select a recording *Format* and *Quality* Level.

1. RealAudio is RealNetworks' audio format. This format saves your music as RealAudio (.rmx) secure or RealAudio unsecured (.rmj) files. Compression levels available are (96, 64, and 44 Stereo, and 32 Kbps Mono). 96kbps Stereo has the best quality sound, but uses the most disk space.

2. MP3 Audio is MPEG layer 3 Audio available at multiple compression levels from 32 kbps mono to 320

kbps stereo. 320 kbps has the best quality sound, but uses the most disk space. We recommend using 128 kbps.

3. Wave Audio is unencoded music that is not compressed. This format has the best quality sound but requires the largest file size, as much as 650MB per CD. Wave Audio files are much larger than RealAudio and MP3 Audio files.

G. Select a *Secure Files* setting

1. *Secure Files* On Files recorded with security on can only be played on the PC on which they were recorded.

Note: If you record with the security feature on, make sure you perform a security key back up (*Backup Security Key* feature located under *Options* menu).

2. *Secure Files* Off Most people choose to turn the *Secure Files* feature off.

Notes: In the future, some music may require the security feature turned on to record to your computer.

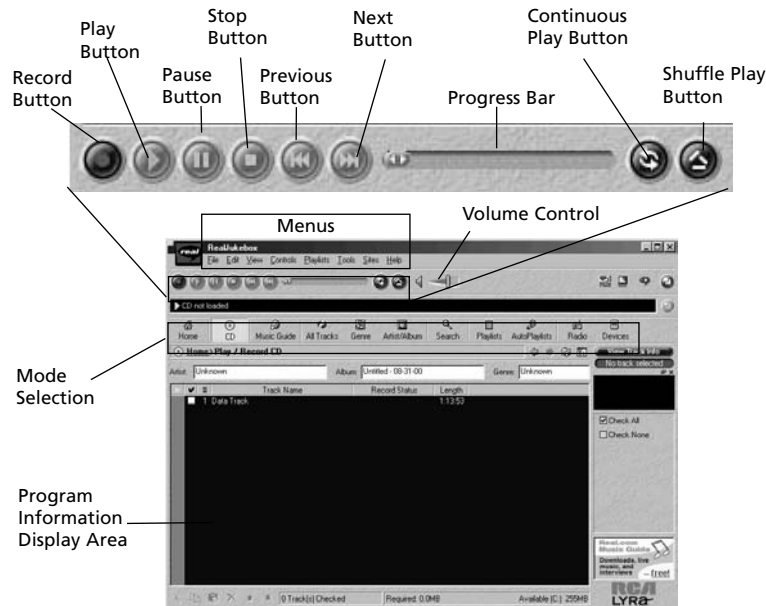
Turn this feature off if you own two computers and exchange files between them.

3. Click *OK*.

Getting Started

Learn the RealJukebox basic controls.

Listed below are the basic functions of the main controls for the program.



Save CD tracks to play on your PC or in your LYRA2 player.

A. Insert a CD into your CD ROM drive. If you have auto play/record enabled, the CD will automatically begin playing and recording.

Note: If you do not want the CD to automatically start playing or recording, you can change the settings.

Choose *Preferences* in the *Tools* menu, and set the options for your personal preference.



Getting Started

Save CD tracks to play on your PC or LYRA2 player. (continued)

RealJukebox is an internet enabled application and connects to the Internet to retrieve information about the CD in the CD ROM.

Make sure the *Automatic CD Lookup Information* is selected in the *Internet Settings Preferences*. Choose *Internet Setting* from *Preferences* in the *Tools* menu.



If you are on a LAN system and the titling feature does not work, contact your administrator.

The information from the Internet appears on your screen.



If the

information cannot be retrieved from the Internet, enter it manually.

Important Note: If the information is not entered, titling and sorting information will not be available in the library.

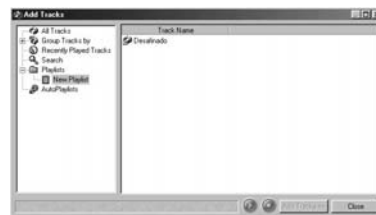
Getting Started

Save CD tracks to play on your PC or LYRA2 player. (continued)

B. Select the tracks you want to play or record.

- To start or stop playback, click play.
- To start or stop recording, click record.
- To pause playback, press pause.
- To stop playback and recording, press stop.

C. After recording is complete, the songs will be stored in the Playlist.



Download music from the Internet.

A. Click the *Music Guide* icon to have *RealJukebox* connect you to the Internet.



B. Download the music you select to your PC, and add it to your playlists.

Note: You can also download files using your regular browser. Just be sure to import (and/or move) them into RealJukebox.

You can also search the internet to download the music you want through the search mode.

A. Click the *Search* icon on the mode selection row.

B. Key in information on how you want the search to be done.



Getting Started

EN

Organize the Playlist.

A. All tracks can be grouped by *Genre*, *Artist / Album*, or all three. Choose *Music Files* from *Preferences* in the *Tools* menu.



B. Click *Change Sub-Folders...* to select the groupings, that you would like to use for your music (any combination of *Artist*, *Album*, or *Genre*). Click *OK*.



C. Click the *Genre or Artist/Album* icon on the mode selection row to view the groups of songs.

To play a song, double click it or highlight it, and press play.

Create a Playlist for playing or downloading.

A. Click the *Playlist* icon in the mode selection row. Click *New Playlist* button on the right of the screen.



B. Fill out the *Create Playlist* form to give specifications as to the name of the new playlist, which tracks to put into the playlist and the location where you want to put it.



C. Press *Add Tracks* on the right hand side in *Playlist* mode. Click on the song(s) you want to add to the playlist so it is highlighted. Press *Add Tracks >>* to store. Repeat this step to enter additional tracks.



Note: Click to select a song, *Shift* and click to select groups of songs, or *Ctrl* and click to select multiple songs.

Getting Started

Create an AutoPlaylist.

A. Click the *AutoPlaylist* icon in the mode selection row. Click *New Auto-Playlist* button on the right of the screen.



B. Fill out the *Create a New AutoPlaylist* form to give specifications as to how songs will be organized in the the new Auto playlist.

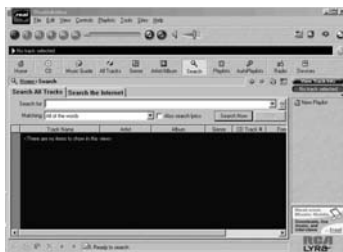


Click and highlight the the playlist you want to edit. Click *Edit Autoplaylist* on the right side column to change preferences at any time.

All tracks saved on your PC will automatically be placed in this folder if track information follows specifications.

Searching for Tracks

A. Click on the *Search* button on the mode selection bar.



B. Click on the *Search All Tracks* page.

C. Key in the music you want to search for and Click *Search Now* to begin search.

Getting Started

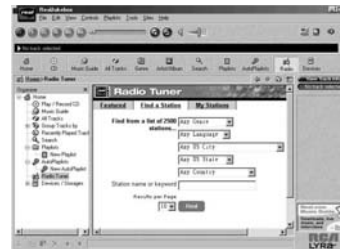
Radio

A. Click on the *Radio* icon on the Mode Selection bar.

B. Click on the *Features* page to search for stations according to Featured Genre or view Featured Stations.



Click the *Find Station* page to search the internet for the type of station you like to find.



A. Click *My Stations* to view stations that you have bookmarked in the past.



B. To add a station to your My Station list, click on the **+** button beside the station you want to store.

C. Your RealPlayer will automatically open when you click on a station to listen to the internet radio

Note: First time users of RealPlayer will need to fill out the registration form to personalize RealPlayer.



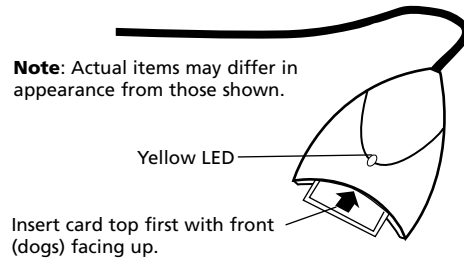
Getting Started

Transfer the audio files to the CompactFlash card.

Use RealJukebox to transfer music files to the CompactFlash card so you can take the music with you anywhere.

Important Note

Removing the card before the data is completely written may cause loss of the entire contents of the card and damage the card.

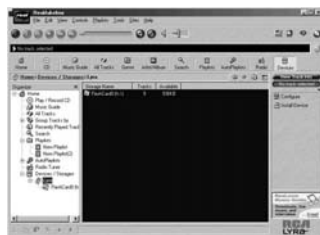


A. Make sure the external drive is installed properly and the CompactFlash card is inserted.

Note: If you remove and reinsert the card, press *F5* to refresh the *Organizer* directory.

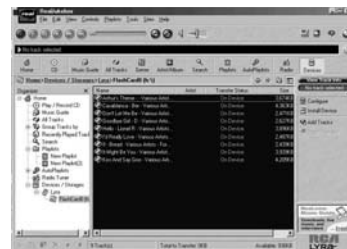
Make sure your player is listed in the *Organizer* under *Devices / Storage*.

B. Double click the *Lyra* icon to display the *Flash Card* icon or click on **+** button beside *Lyra* on the *Organizer* directory.



C. Double click the *Flash Card* icon to see what is recorded on the flash card.

D. Click the *Add Tracks* icon on the right side column. Select the music and click *Add Track>>* button on the bottom.



Note: Click to select a song, *Shift* and click to select groups of songs, or *Ctrl* and click to select multiple songs.

Getting Started

Transfer the audio files to the CompactFlash card. (continued)

E. After you have selected all of the music you want to record on the flash card, double click the *Flash Card* icon.

File size and availability are listed in the status and window displays.

Notes: The card operates like a floppy drive. The same drag and drop or copy methods apply.

Transfer all your MP3 or G2 files in groups to prevent reloading the appropriate driver for each type.

F. Click the *Begin Transfer* button on the right of the screen to download your songs to the CompactFlash card.

Caution

The yellow LED on the CompactFlash external drive turns bright yellow when files are being written to the CompactFlash Card.

After the yellow light dims, wait at least 5 seconds before removing the card from the external hard drive.

Removing the card before the data is completely written may cause loss of the entire contents of the card and damage the card.

G. Click *Exit* under the *File* menu to close RealJukebox.

H. Pull the card out to remove it from the external drive.

Helpful Hints

For detailed information on CompactFlash card file management, creating playlists, and grouping management, please consult the on-line documentation or *Help* section.

The external drive can also be used to transfer files from digital cameras using CompactFlash cards to the PC or store files from the PC on CompactFlash cards.

Note

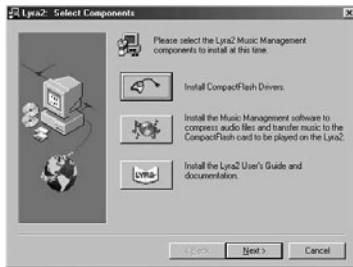
MP3 files transferred to the CompactFlash card using Lyra compatible software are converted to an encrypted form for purposes of copyright protection, but the encryption process does not change the MP3 encoding characteristics of the file or the file's compliance with the MPEG-1, Layer 3 (MP3) standard. Additionally, the original file is left unaffected on the user's system.

Getting Started

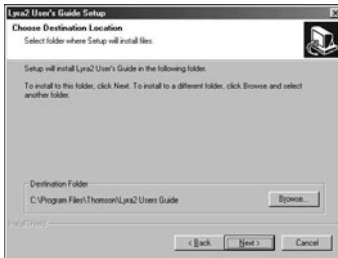
8. Install the LYRA2 user's guide and documentation.

After you have installed the external drive and placed the LYRA2 software CD in the CD ROM drive as described on pages 6-8, follow these directions to install the LYRA2 User's Guide and documentation.

A. Display the *Select Components* screen.



Click the *Install the Lyra2 User's Guide and documentation* button.



B. Select the *Destination folder* where you want the LYRA2 User's Guide installed and click *Next*.

C. Select the location for the program icons and click *Next*.

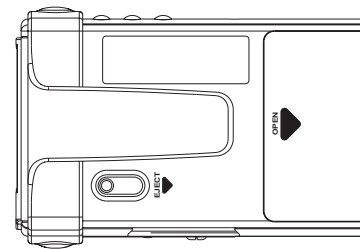


D. Click *Finish* to complete the installation.



Getting Started

10. Insert the alkaline batteries into the player.



Battery Compartment Door
(Insert two alkaline "AA" batteries.)

Before you can use the player, you must insert two alkaline "AA" batteries.

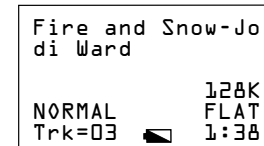
A. Slide the battery compartment door in the direction of the arrow and lift up.

B. Insert the batteries into the battery compartment making sure the polarities (+ and -) are aligned correctly with the + and - markings in the compartment.

C. Close the door to the battery compartment.

Low Battery Indicator ()

The low battery indicator appears in the LCD display when the batteries are getting low. Replace the batteries.



Battery Safety Precautions

Any battery may leak electrolyte if mixed with a different battery type, if inserted incorrectly, or if all batteries are not replaced at the same time.

Any battery may leak electrolyte if disposed of in fire or an attempt is made to charge a battery not intended to be charged.

Discard leaky batteries immediately. Leaking batteries can cause skin burns or other personal injury. When discarding batteries, be sure to dispose of them in the proper manner, according to your state/provincial and local regulations.

Rechargeable Batteries

Risk of fire or explosion if the following is not observed:

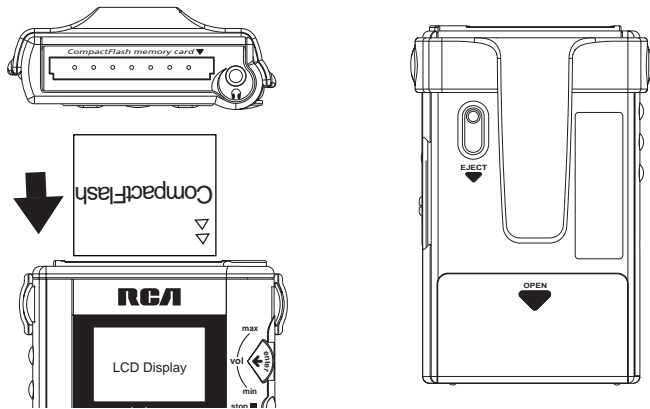
Do not charge any battery other than PC202MH, PC204MH, or PC224 in this equipment.

Do not use or charge the batteries if they appear to be leaking, discolored, deformed or in any way abnormal.

Getting Started

11. Insert the CompactFlash™ card in the player.

Before you use the digital audio feature, you must insert the removable card with the MP3, Windows Media Audio or G2 music files into the player.



(A.) Check to make sure the unit is turned off. (B) Insert the card top first into the player with the front of the card facing the front of the player as shown. Make sure the card is inserted fully into the player.

Caution: Do not force the card into the player as this may cause damage to the card and/or player.

Note: To remove the card from the player, (A) turn off the player (B) slide the eject lever on the back of the player with your thumb to eject the card.

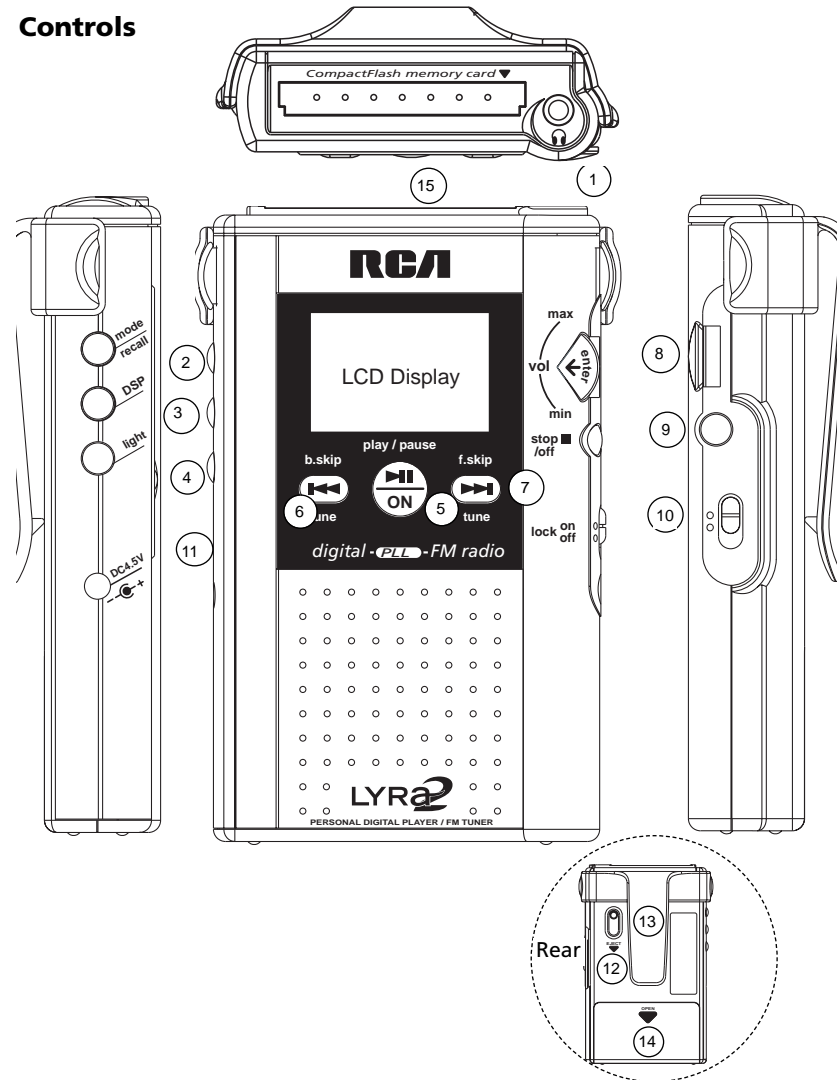
12. Attach the headphones to the player.



Insert the plug on the headphone cable into the headphone jack (🎧) on the top of the player and place the headphones on your head by fitting it around your ears.

Player Features

Controls



Player Features

Controls (continued)

1. Headphone Jack (🎧)

Insert the plug from the headphone in this jack on the top of the player.

2. MODE / RECALL Button

- **Selects Playback mode:** Press to select a playback mode (*NORMAL, REPEAT 1, REPEAT ALL, SHUFFLE, REPEAT ALL SHUFFLE, PROGRAM, or REPEAT ALL PROGRAM*).

Press twice to adjust the contrast of the LCD display.

- **Contrast Adjustment:** When in stop mode, you can adjust the contrast between the light and dark images in the LCD display. Press the *MODE* button twice to display the contrast feature. Use the *SELECT/VOLUME* control to adjust the contrast. Press *MODE* or *STOP* to remove the display.

- Enter Station Recall Mode

3. DSP (Digital Signal Processor) Button

In Digital Music Mode, press to select a DSP mode: *FLAT, BASS BOOST, ROCK, POP, JAZZ, or EQ* (equalizer). The equalizer lets you cycle through five frequency bands and adjust the gain of the selected band for your personal preference.

In Radio Mode, press DSP to toggle between Bass Boost ON/OFF.

4. LIGHT Button

Press to turn light on and off in the LCD panel. (Light turns off automatically after approximately 7 seconds for every press)

5. PLAY / PAUSE Button

- **At player Off mode:** Press once to turn on player, press again to start playback in digital music mode or turn radio on. OR Press and hold to return to the mode last used before entering standby mode.

- **While player is playing:** Press to place the player in the pause mode. Press again to return to playback.

- **At tuner On Mode:** Press to toggle between Forced Mono and Stereo reception modes.

6. B. SKIP / Tune back Button

- **While player is playing:** Press once momentarily to skip back to the last track. Press and hold to search backward within the same track.

- **Player Stopped:** Press to move the cursor back to previous item.

- **Player with Equalizer Displayed:** Press to cycle through the five frequency bands of the equalizer. You can adjust the gain of the selected band with the *SELECT/VOLUME* control.

- **Tuner On Mode:** Press to tune down radio frequency.

Player Features

Controls (continued)

7. F. SKIP / Tune Up Button

- **Player Playing:** Press once momentarily to skip to the next track. Press and hold to search forward within saved tracks.

- **Player Stopped:** Press to move the cursor forward to an item.

- **Player with Equalizer Displayed:** Press to cycle through the five frequency bands of the equalizer. You can adjust the gain of the selected band with the *SELECT/VOLUME* control.

- **Tuner On Mode:** Press to tune up radio frequency.

8. MULTI-FUNCTION SCROLL, SELECT/ ENTER / VOLUME CONTROL

- **Player Playing:** Turn the dial up or down to adjust volume.

- **Player Stopped:** Turn the dial up or down to move the cursor to an item. Press this control in to select the item for playing or adding/removing the item to/from a program.

- **Player with Equalizer Displayed:** Turn the dial up or down to adjust the gain of a selected frequency band. The band is selected with *F. SKIP* or *B.SKIP*.

9. STOP•OFF Button

- **Player Playing:** Press to place the player in the stop mode.

- **Player Stopped:** Press to turn off the player.

- **Tuner On Mode:** Press to return to the Selection Menu or turn off the radio.

- Press and hold to turn off player from all modes.

10. LOCK Button

- Slide button to *LOCK ON* position to inactivate all buttons.
- Slide button to *LOCK OFF* position to release lock on all button functions.

11. Car Kit and AC Adapter Plug (not included)

- Connect the optional car cord adapter and the optional AC power adapter here.

12. Eject Lever

Slide lever in direction of arrow to remove card from the player.

13. Belt Clip (Removable)

The removable belt clip attaches here.

14. Battery Compartment Door

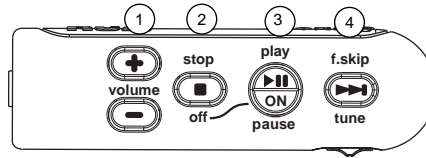
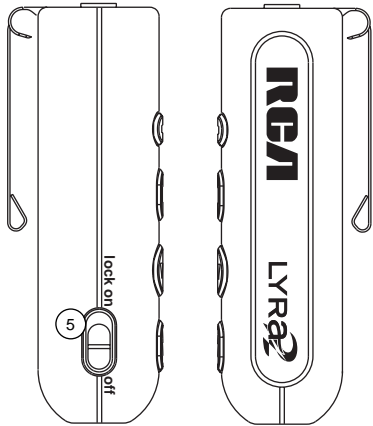
Open door by sliding in direction of arrow and lifting. Insert batteries making sure polarities (+ and -) are aligned correctly.

15. Card Slot

Insert the removable card here top first with front facing front of player.

Player Features

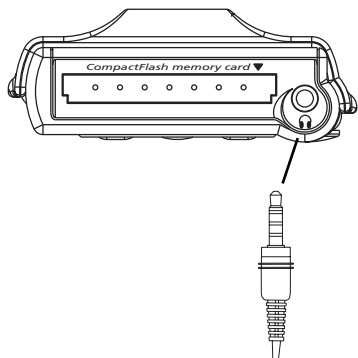
Remote control



1. Volume Control
2. Stop / Off Button
3. Play / Pause / On Button
4. f.skip Button
5. Lock Button

Connecting the Remote Control

- Plug the remote into the headphone jack on top of the player.

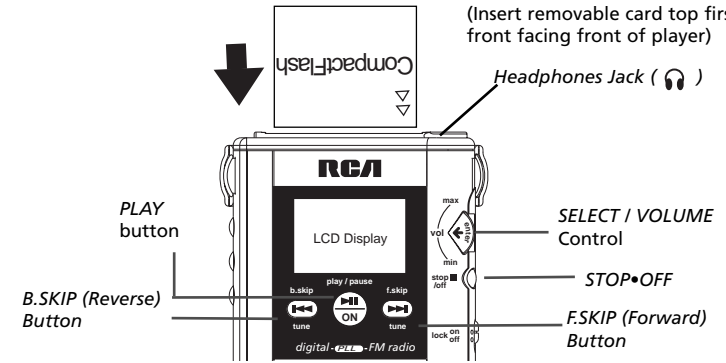


Note: When using the remote control to operate the player, it is best to lock buttons on the main unit to avoid accidentally pressing them.

- Shift the LOCK button on the main unit to the ON position. A lock key icon will show on the LCD display. Only the buttons on the main unit will be locked.

Player Features

Playing a CompactFlash Card

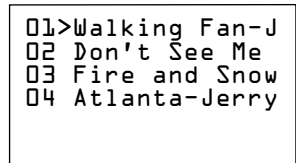


1. Make sure batteries are installed in the player.
2. Insert the headphone cable plug into the headphone jack () on top of the player.
Please refer to GETTING STARTED NO.12 (pg 36) for further instructions
3. Insert the card encoded with MP3, Windows Media Audio or G2 format music files. Make sure to fully insert the card.
Please refer to GETTING STARTED NO. 11 (pg 36) for detailed information on inserting CF card.
4. Press **PLAY** to turn on the player. The selection menu for **DIGITAL AUDIO** or **FM RADIO** appears on the display.

Note: The unit will turn off to save battery power automatically after 1 minute if no buttons are pressed

Either:

1. Press **ENTER** dial to confirm selection or
2. use f.skip / b. skip to select.



NOTE: If **DIGITAL AUDIO** is selected and no CF card is in the slot, you will remain in the selection menu. Remember that you **MUST** turn off the unit completely to insert the CF card otherwise it cannot be read. Power On the unit again after the card is fully inserted.

5. If you cannot see the display in shaded or dark areas, press **LIGHT** to turn on the light in the LCD display.

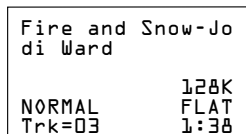
Note: The light will automatically time out after 7 seconds if no buttons are pressed.



Player Features

Playing a CompactFlash Card (continued)

6. Press *PLAY* again to start playing the first track in the list. Detailed information about the track that is playing appears in the LCD display.

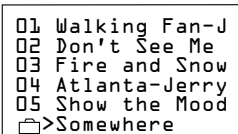


The name of the song, artist, album, playback mode selected, DSP mode selected, number of the track playing, and the elapsed playing time of the track appear.

Note: The *Volume bar*, data rate and battery indicators may also appear.

Search / Select Track in STOP Mode

To play a different track when the player is stopped: Press *F.SKIP*. or *B.SKIP* or turn the *SELECT/VOLUME* control up or down to move the cursor down or up the list.



Press *PLAY* to play the track.

Cautions: Headset Safety

Do not play your headset at a high volume.

Hearing experts advise against continuous extended play.

If you experience a ringing in your ears, reduce the volume or discontinue use.

Do not use the headphones while operating a motorized vehicle or bicycle. It may create a traffic hazard and is illegal in many areas.

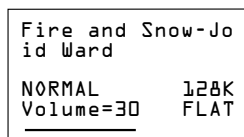
Use extreme caution or temporarily discontinue use in potentially hazardous situations.



Search in Playback

To play the next or previous track while the player is playing, press *F.SKIP* or *B.SKIP*.

7. During playback, adjust the volume by turning the *SELECT/VOLUME* control up or down. The *Volume* level selected appears in the display.



8. Press *STOP•OFF* to place the player in the stop mode. The playlist will show on the display

Note: After approximately one minute without key activation, the player will turn off to conserve batteries.

9. Press *STOP•OFF* again to return to the selection menu.

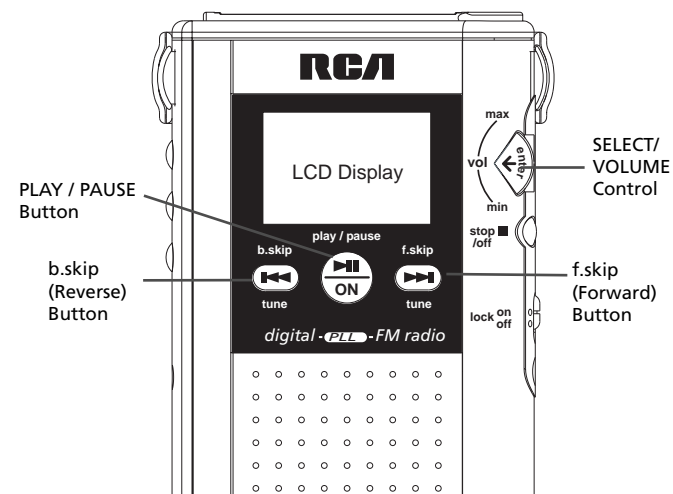
or

Press and hold *STOP•OFF* to turn off the player.

10. Press *STOP•OFF* from the selection menu and the player will power off.

Player Features

Playback Features



Pause Feature

During Digital Music playback, you can pause the player and mute the volume.

- Press *PLAY* during playback to pause the player. *PAUSE* will flash on the display.

Note: If the player is left in pause for approximately one minute, it will turn off automatically. Press *PLAY* to activate the auto resume feature.

- Press *PLAY* again to resume playback.

Auto Resume Feature

The player will automatically turn off if no buttons are activated for approximately one minute. The player will retain the following information and setting if the same card remains in the player.

- Play/repeat mode selected
- Track play list
- Volume control setting
- Last track played information
- DSP and equalizer settings

Press *PLAY* to resume playback from the track the player was paused.

Player Features

Playback Features

Skip and Search Features

Skip Feature

When the file list is displayed, *F.SKIP* and *B.SKIP* or the *SELECT/VOLUME* control allows you to select which track to play using the file list.

- Press *F.SKIP* to move the cursor down the list.
- Press *B.SKIP* to move up the list.

Note: If you search beyond the last track, the cursor will return to the first track.

Press *PLAY* to play the selected track.

During playback or pause, press and release *F.SKIP* or *B.SKIP* to skip to the next or previous track.

- Press *F.SKIP* to skip to the next track.
- Press *B.SKIP* to skip to the beginning of the current track being played. Press again to skip to the previous track.

Note: If you skip the last track, you will return to the first track in the list.

Search Feature

During playback, *F.SKIP* and *B.SKIP* allow you to audibly search through the tracks at a faster speed.

- During playback, press, hold and release *F.SKIP* to search forward at a faster speed.

- During playback, press, hold and release *B.SKIP* to search in reverse at a faster speed.

Notes:

If you search in reverse beyond the beginning of the playing track, the player will start playing the track you selected automatically.

If *REPEAT 1* is activated, you cannot reverse beyond the selected track. The player will start playing the repeating track.

Scroll Feature

When the player is stopped, you can scroll down the list of tracks by turning the *SELECT/VOLUME* control up or down.

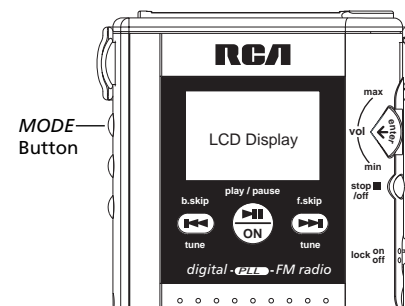
Note: If you continue to scroll down the list beyond the last track, the player return to the first track on the list.

1. Place the player in the stop mode.
2. Turn the *SELECT/VOLUME* control up or down to scroll through the list of tracks available on the card inserted in the player.
3. Turn and hold the *SELECT/VOLUME* control up or down for more than one second for

Player Features

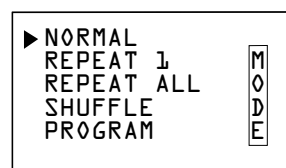
MODE Menu

You can use the MODE menu to select several playback features (*REPEAT 1*, *REPEAT ALL*, *SHUFFLE*, *REPEAT ALL SHUFFLE*, *PROGRAM*, and *REPEAT ALL PROGRAM*). These are described on the next two pages.



Repeat and Shuffle Features

1. Place the player in the stop mode, and press *MODE* to display the *MODE* menu.



2. Press *F.SKIP* or turn the *SELECT/VOLUME* control to move the cursor to the feature you want to select.

- Select *REPEAT 1* to repeat one track over and continuously.

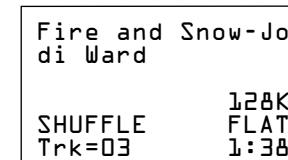
- Select *REPEAT ALL* to play all the tracks in the selected playlist over continuously.
- Select *SHUFFLE* to randomly play up to 20 tracks. No tracks will be repeated.
- Select *REPEAT ALL SHUFFLE* to play tracks randomly with repetition.

Note: A cursor will appear before *REPEAT ALL* and *SHUFFLE*.

3. Press the *SELECT/VOLUME* control in to select the mode or the player will select the mode next to the cursor after five seconds.

Notes: Pressing *PLAY* also starts the player playing with the selected feature.

When the player is playing, you can cycle through the playback modes by pressing *MODE* then *b.skip* / *f.skip*. The mode selected appears in the display.

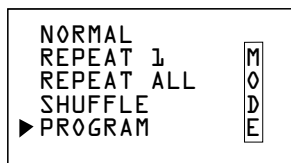


Player Features

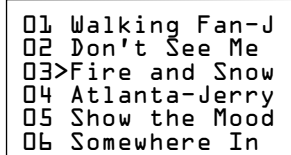
MODE Menu (continued)

Program Feature

1. Display the *MODE* menu, and press *F.SKIP* to move the cursor to *PROGRAM*



2. Press the *SELECT/VOLUME* control in to display the list.



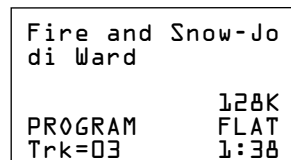
Press *F.SKIP*, *B.SKIP* or turn the *SELECT/VOLUME* up or down to move the cursor to the first track you want in your program. Press *SELECT/VOLUME* in to select a track. A program mark ▶ appears in front of the selected track.

Note: To remove a track from the program, move the cursor to the track and press in the *SELECT/VOLUME* control.

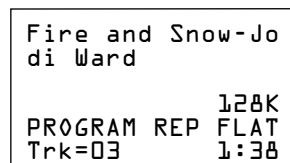
3. Continue to mark the tracks in the order you want them to play (up to 20 total).

Note: If you try to select more than 20 tracks, the message *MEMORY FULL* appears.

4. Press *PLAY* to start the program playing.



5. Press *MODE* to select *PROGRAM REP* to have the program keep repeating over and over.



6. Press *PLAY* to pause the program. Press *STOP•OFF* to stop the program.

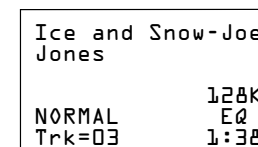
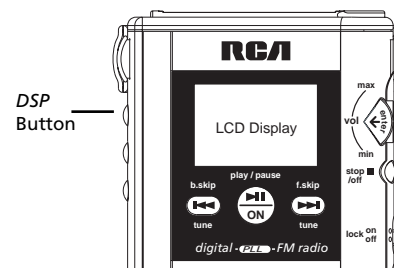
To Clear Programs from Memory

1. Press *STOP*.
2. Press *MODE*.
3. Select *PROGRAM*. A message will appear and ask if you want to clear all programs. Select *YES* to clear program by turning the *SELECT/VOLUME* control button.
4. Press *ENTER* in to confirm selection.

Player Features

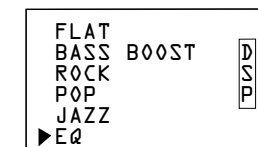
DSP (Digital Signal Processor) Menu

You can use the *DSP* menu to select several *DSP* modes (*FLAT*, *BASS BOOST*, *ROCK*, *POP*, *JAZZ*) or adjust the equalizer (*EQ*).

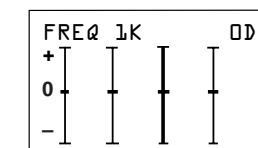


Equalizer Feature

1. Display the *DSP* menu, and press *F.SKIP* to move the cursor to *EQ* (equalizer).

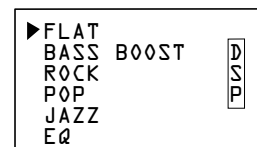


2. The *EQ* (equalizer) display will appear in approximately one second.



DSP Modes

1. Place the player in the stop mode, and press *DSP* to display the *DSP* menu. You can select *FLAT*, *BASS BOOST*, *ROCK*, *POP*, *JAZZ*, or use the equalizer (*EQ*) to personally adjust the sound.



2. Press *F.SKIP* or *B.SKIP* to move the cursor to *FLAT*, *BASS BOOST*, *ROCK*, *POP*, or *JAZZ*.

Note: If you select *EQ* (equalizer), the equalizer menu appears.

3. Press the *SELECT/VOLUME* control in to select the *DSP* feature. The player returns to the file list.

Notes: Pressing *PLAY* also starts the player playing with the selected feature.

When the player is playing, you can cycle through the playback modes by pressing *DSP*. The mode selected appears on the display.

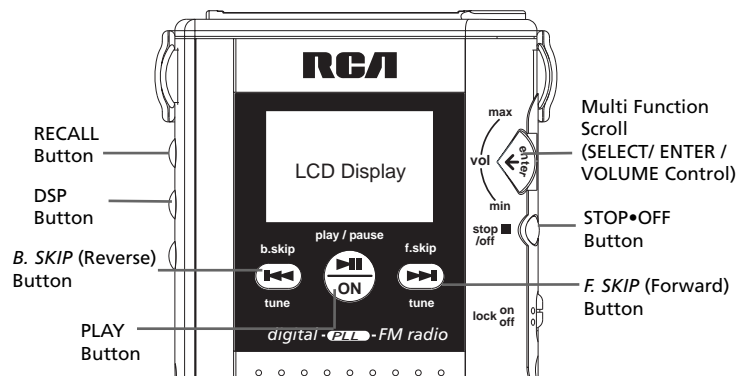
- Press *F.SKIP* or *B.SKIP* to select one of the five frequency bands (60, 250, 1k, 4k, and 12k).
- Turn the *SELECT/VOLUME* control up or down to adjust the band (+15dB to -15dB).

Note: Press the *SELECT / VOLUME* control in to reset the band to 0.

3. Press *PLAY* to start playback with the adjustments you have selected.

Player Features

Radio Mode

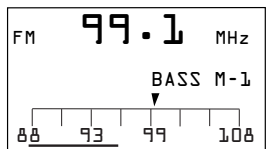


RADIO Mode

1. Press the *PLAY* to turn on the player
2. Selection Menu for Digital Audio and FM Radio appears on the LCD display



3. Press *b.skip* or *f.skip* to select by highlighting the Radio icon.
4. Press *PLAY* to confirm selection.



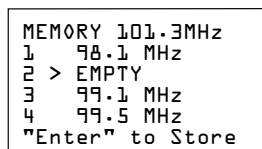
Search Features

- Press *F.SKIP* / *B.SKIP* for manual tuning to step forward / backward in radio frequency.
- Press and hold *F.SKIP* / *B.SKIP* for more than 1 second and release for *SEEK UP / DOWN* mode. Search continues until a station is found.
- Press and hold *F.SKIP* / *B. SKIP* for more than 3 seconds for *SCROLL UP / DOWN* mode. Search will only stop when the button is released.

Preset Memory

- 15 Memory spaces are available for storing channel frequency.

 1. Press *F.SKIP* / *B.SKIP* to select the desired station you want to store.
 2. Push *ENTER* to enter the Program menu. The player will automatically locate an available memory location.



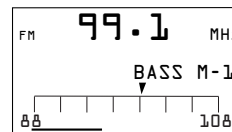
Player Features

Radio Mode

Preset Memory (cont'd)

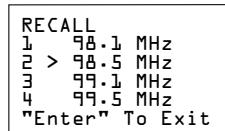
3. Turn the multi-function scroll (select) button or press *f.skip* / *b.skip* to select the desired channel number (1-15) you want to store in.
 4. Push *ENTER* to confirm storage and exit Program mode
- NOTE:** Program Mode will automatically exit if no buttons are pressed for 10 seconds. In this case, the station will not be stored.
- OR Press *DSP / PLAY* to exit Program Mode sooner without storing the station.

NOTE: Press *DSP / PLAY* to exit program mode will not change settings in radio mode.



Memory Recall

- Press *MODE / RECALL* to browse the 15 channel memory locations.
- Turn the multi function scroll or press *f.skip* / *b.skip* to tune to a preset channel.

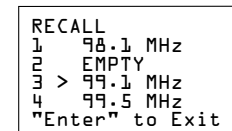


NOTE: Recall will automatically exit if no buttons are pressed for 10 seconds.

OR Press *ENTER / PLAY* to exit recall mode sooner

Delete Preset Memory

1. Press *MODE / RECALL* to view the current Preset Memory list.
2. Turn the dial or press *f.skip* / *b.skip* to select the preset memory you want to delete.
3. When the desired one is selected, press and hold *MODE / RECALL* for 2 seconds to delete.
4. "EMPTY" will show beside the memory location that was cleared and it will tune to the next stored frequency.



Suppressing Stereo Signal

- Press *PLAY* to toggle between FM mono and stereo for stereo FM stations. A stereo indicator will appear when in stereo mode.

DSP (Digital Signal Processor)

- Press to select Bass Boost ON/Off. Bass indicator will appear when Bass Boost is on.

STOP Feature

- Press *STOP / OFF* to return to the Selection Menu.
- Press *STOP / OFF* again to turn off the player.

OR

- Press and hold to turn off player.

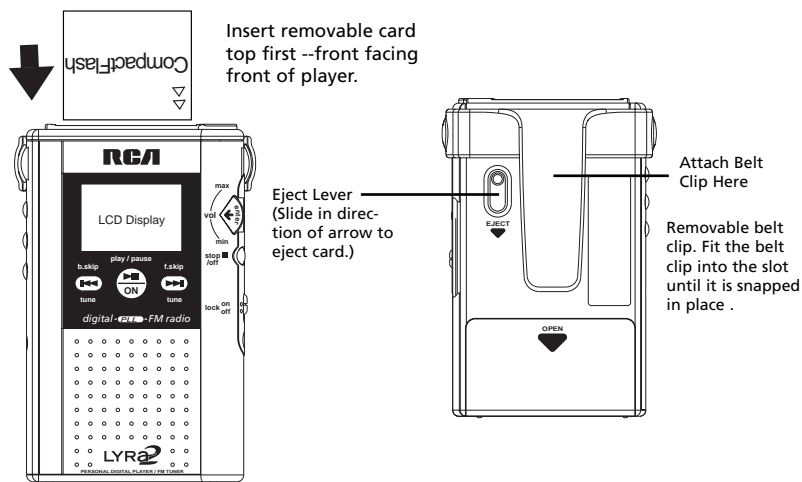
Included Accessories

CompactFlash™ Memory Cards

The player uses Type I and II CompactFlash memory cards. Make sure you use only these cards. Use of the wrong card could damage your player or CompactFlash Card reader. We recommend the use of RCA memory cards available from your local dealer or by phone order on page 51.

The cards can be used over and over again. Use Music Match Jukebox or RealJukebox to delete the old tracks and then transfer the new tracks to the card.

Storage: CompactFlash cards can store approximately 2 minutes of audio per MB at an MP3 bit rate of 64 kbps.



Inserting a Card

Insert the card with the top first and the front of the card facing the front of the player as shown. Make sure the card is inserted firmly.

Do not force the card into the player as this may cause damage to the card and/or player.

Removable Belt Clip

The player has a removable belt clip. Fit the belt clip into the slot on both sides of the player. You should hear a "click" sound when it is locked in place. Make sure to attach the belt clip firmly before using it to carry your player.

Removing a Card

Turn the player off. Slide the eject lever in the direction of the arrow to eject the card from the player.

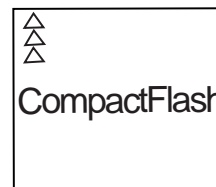
Notes: Refer to the troubleshooting guide on page 55 if you have any difficulty playing, reading, or writing to the card.

Optional Accessories

Pricing information and ordering instructions can be obtained by calling 1-800-338-0376 or visit www.lyrazone.com.

EN

CompactFlash Memory Card



No. PC32CF, PC48CF, and PC64CF

Any of these CompactFlash memory cards can be used with your player.

External CompactFlash Drive

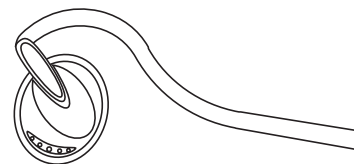


No. PC 2200U / PC 2200P USB Parallel

The PC 2200U external CompactFlash Drive attaches to the universal serial bus port on your computer.

The PC 2200P external CompactFlash drive attaches to the parallel printer port of your computer. The drive has a passthrough connector for your printer and keyboard.

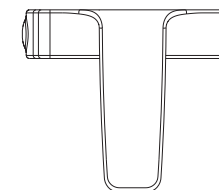
Stereo Headphones



No. 54118

Lightweight stereo headphones with 3.5mm stereo plug.

Removable Belt Clip

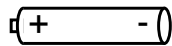
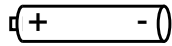


No. 54119

This belt clip allows you to carry the player on your belt.

Optional Accessories

Rechargeable Batteries



No. PC202MH

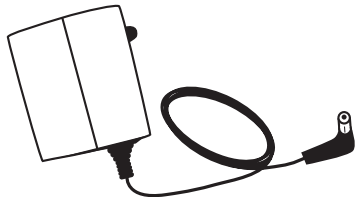
These nickel-metal-hydride batteries are rechargeable. They operate the LYRA approximately 1/2 as long as new alkaline batteries.

These batteries can be charged over and over again. To charge these batteries, you need the AC power adapter #PC611.

Caution

Use of other nickel-metal-hydride batteries may void your warranty.

AC Power Adapter PC611

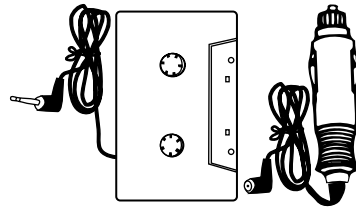


This adapter allows you to power your player from 110-120V AC power.

This adapter is required to charge the rechargeable nickel-metal-hydride batteries #PC202MH.

See AC adapter's instruction book for proper operating details.

Car Kit (Cassette and Car Cord Adapters)



No. 54097 and No. 54095

Each of these items is purchased separately.

The cassette adapter #54097 allows you to listen to the LYRA through your car's speakers by using the car's cassette player.

The car cord #54095 allows you to power your LYRA from the cigarette lighter socket of a car, truck, or RV.

Specifications and descriptions of optional accessories are subject to change without notice.

Specifications

EN

Player

Size: (H) 4.11 x (W) 2.5 x (D) 0.75 inches

Weight: 3.2oz. without batteries or memory card

Solid state memory

Batteries: 2 alkaline "AA"

Signal-to-noise ratio: > 70 db (MP3 mode) 55db (radio mode)

Slot: 1 external CompactFlash slot:
supports Type I or Type II CompactFlash cards.

Connectors: Headphone, DC Jack

CompactFlash Card Reader / Writer

- Universal Serial Bus (USB) Transfer Rate: up to 8 Mbps

The descriptions and characteristics given in this document are given as a general indication and not as a guarantee. In order to provide the highest quality product possible, we reserve the right to make any improvement or modification without prior notice. The English version serves as the final reference on all product and operational details should any discrepancies arise in other languages.

Troubleshooting Guide

Trouble	Checks and Adjustments
No power to external drive	<ul style="list-style-type: none"> • Check all connections. See page 4. • Make sure computer is turned on and plugged into an operating outlet.
Player does not operate	<ul style="list-style-type: none"> • Batteries may be weak. Install new batteries. • Remove batteries and hold down one or more buttons for several seconds to drain the microprocessor inside the player to reset it. Reinstall the batteries and try player again.
CompactFlash card will not play or you cannot insert it all the way into the player	<ul style="list-style-type: none"> • Make sure card is inserted correctly into player--top facing in and front facing the front of player. Do not force. • Card is not encoded with compatible audio format (MP3, G2, or other compatible format). • Card may be damaged. • Card may need to be defragmented (or reformatted--this will erase all data on the card).
Player repeats same track or all tracks	<ul style="list-style-type: none"> • Repeat play is turned on. Press <i>MODE</i> to change the play mode.
Player plays tracks in random order	<ul style="list-style-type: none"> • Shuffle play is turned on. Press <i>MODE</i> to change the play mode. • Program play is turned on. Press <i>MODE</i> to change the play mode.
Player plays audio with DSP sound	<ul style="list-style-type: none"> • Press <i>DSP</i> to change the <i>DSP</i> mode. Make sure equalizer is set to your preferences.
Player pauses during play	<ul style="list-style-type: none"> • Press <i>PLAY</i> to resume playback.
Long delay between songs	<ul style="list-style-type: none"> • May be alternating between MP3 and other formats. Try grouping songs by format, and then transfer the files.
Songs not in same order as CD	<ul style="list-style-type: none"> • Songs are listed in order they were transferred to CompactFlash card.
Audio distorted at high volume	<ul style="list-style-type: none"> • In equalizer mode, reduce the BASS gain. • Switch from <i>BASS BOOST</i> mode. • Reduce volume.
Player displays "Config File Not Found"	<ul style="list-style-type: none"> • Transfer files to CompactFlash card using MusicMatch Jukebox or RealJukebox software.
Poor radio reception	<ul style="list-style-type: none"> • Ensure headphones are plugged in the plug. • Straighten the headphone cord and re-orient the cable • Turn off nearby electrical appliances, such as hair dryer, vacuum cleaner, microwave, fluorescent lights. • Press <i>PLAY</i> to switch to FM mono.
Radio auto search does not stop	<ul style="list-style-type: none"> • Move to another area for stronger signal reception

Limited Warranty (For US)

EN

What your warranty covers:

* Any defect in materials or workmanship.

For how long after your purchase:

* 90 days - Unit exchange, which includes parts and labor.

* 91 days to 1 year - Unit exchange, which includes parts only; you pay the labor.

* The warranty for rental units begins with the first rental or 45 days from date of shipment to the rental firm, whichever comes first.

What we will do:

* During the initial 90 days:

Exchange the defective portion of your Player with a new or, at our option, refurbished unit.

* After the 90 days and within one year:

Exchange the defective portion of your Player with a new or, at our option, refurbished unit.

We will charge you a flat exchange cost to replace a defective player. This charge covers the labor cost for its repair.

How you get service:

* Contact us on the Internet at www.lyrazone.com and have your unit's date of purchase and model/serial number ready. The model/serial number information is on the back of your Player.

* Self diagnostic screens will allow you to troubleshoot your problem over the Internet.

*If after going through the troubleshooting screens, you determine that your player requires service, contact us at 317-415-4391. You must contact us to obtain a RA for a service exchange. No returns will be accepted without the RA number.

Option I:

1. Provide your Discover, MasterCard or Visa account number and expiration date to your phone representative. This is for security purposes only and your account will not be charged at this time.

2. We will send you a replacement unit.

3. If you return the unit to us within 14 days from the date you were provided a RA number, only items not covered by warranty will be charged to your account. If your unit is not received within 14 days, the suggested retail value of the Player will be charged to your credit card. This amount will be credited, less a \$10 handling fee, if the unit is subsequently received.

4. Ship your defective unit back to us using the replacement unit's carton. Shipping instructions will be included on the carton along with your RA number which will allow you to easily ship the unit back to us. Make sure you insure your shipment in case of damage or loss. Include with the shipment:

* Evidence of purchase date such as a bill of sale.

* A brief note describing your Player problem.

* Your name, address and phone number.

Limited Warranty (For US)

Only ship the defective portion of your Player. In all cases retain the compact flashcard. TCE will not be responsible for any software you have returned with your product and there is a good chance it will not be returned to you.

Option II:

* Write the RA number on the outside of the carton used to return the unit. Make sure you insure your shipment in case of damage or loss.

* Carefully pack the unit using the original box and packing material if possible. Please retain all non-defective accessories that were included with your unit such as the headphones. Under no circumstances return the compact flashcard. TCE will not be responsible for lost software.

*Include with the shipment:

1. Evidence of purchase date such as a bill of sale.
 2. A brief note describing your Player problem.
 - 3 Your name, address and phone number.
- * After we receive your product, a new, or at our option, refurbished unit will be shipped to you.

What your warranty does not cover:

- * Acts of nature, such as but not limited to lightning damage.
- * Adjustment of customer controls.

- * Damage from misuse or neglect.
- * A unit that has been modified or incorporated into other products or is used for institutional or other commercial purposes.
- * Batteries.
- * Units purchased, serviced or operated outside the U.S.A.
- * Loss of software, programming.
- * Installation.
- *Shipping damage if the unit was not packed and shipped in the manner prescribed by Thomson.

Product Registration:

* Please complete and mail the Product Registration Card packed with your Player. It will make it easier to contact you should it ever be necessary. The return of the card is not required for warranty coverage.

How state law relates to warranty:

* This warranty gives you specific legal rights and you may have other rights that vary from state to state.

If you purchased your product outside the United States:

*This warranty does not apply. See your dealer for warranty information.

Limited Warranty (For Canada)

EN

Thomson Consumer Electronics Canada, Inc. warrants to the purchaser or gift recipient that if any manufacturing defect becomes apparent in this product within 1 year from the original date of purchase, it will be replaced free of charge, including return transportation.

This warranty does not include damage to the product resulting from accidents, misuse or leaking batteries.

Should your product not perform properly during the warranty period, either:

1. Return it to the selling dealer with proof of purchase for replacement,

OR

2. Remove the batteries (where applicable), and pack product complete with accessories in the original carton (or equivalent).

— Mail prepaid (with proof of purchase) and insured to:

Thomson multimedia Ltd.
6200 Edwards Blvd.,
Mississauga, Ontario,
L5T 2V7
Canada

The provisions of this written warranty are in addition to and not a modification of or subtraction from the statutory warranties and other rights and remedies contained in any applicable legislation, and to the extent that any such provisions purport to disclaim, exclude or limit any such statutory warranties and other rights and remedies, such provisions shall be deemed to be amended to the extent necessary to comply therewith.

If you are unable to find a qualified servicer for out of warranty service, you may write to:

Thomson Multimedia Inc.
P.O. Box 0944
Indianapolis, Indiana, U.S.A., 46206-0944

Attach your sales receipt to this booklet for future reference. This information is required if service is needed during the warranty period.

Index

A

- AC adaptor 52
- Accessories
 - included 5, 50
 - optional 51, 52
- Auto resume feature 43

B

- Batteries
 - indicator 35
 - inserting 35
 - safety precautions 35
- Belt clip 39, 50
- Belt clip, attaching 50
- Browse button 32
- B. skip button 38

C

- Card slot 39
- Caution while driving 3
- Cautions 3, 36, 42, 52
- Checks and adjustments 51
- CompactFlash card
 - insert in player 36, 50
 - play 41
 - remove 36, 50
 - slot 36
 - types 50
 - using 50
- CompactFlash drivers installation 6
- CompactFlash external drive, connect 7
- Computer system requirements 4
- Contrast adjustment 38

D

- DSP button 37, 38, 47, 49
- DSP modes 38, 47, 49

E

- Eject lever 36, 50
- Equalizer 47

F

- Features 36
 - auto resume 43
 - DSP (digital signal processor) 47
 - MODE menu 45, 46
 - pause 43
 - scroll 44
 - search 44
 - skip 44

G

- Getting started 5

H

- Headphone jack 36, 38
- Headphones, attach 36
- Headset safety 42

I

- Important information 3
- Important safety information
 - inside front cover
- Included accessories 5, 50
- Internet sites
 - download music 3
 - LYRA updates 7
 - www.lyrazone.com 1
- Introduction 1

L

- LCD display 37, 45, 46
- LIGHT button 37, 38
- Limited warranty 55, 57
- LOCK button 39, 40
- LYRA software 6,

Index

M

- Memory Recall 49
- MODE button 38, 45
- MODE menu 45, 46
- MP3 audio 12
- Multi function scroll 39
- Music management software 7, 8
- MusicMatch Jukebox 14
 - basic controls 14
 - basic preferences 10
 - CD-R button 19
 - CLEAR button 19
 - CompactFlash card 21
 - create a playlist 19
 - digital rights management option 13
 - Download button 22
 - Download music 16
 - download music from the Internet 16
 - download playlist to LYRA2 21
 - edit tags 20
 - email address 9
 - install 9, 10
 - Internet site 10
 - Music Guide button 16
 - Music Guide Window 14
 - Music Library 18, 19
 - Music Library Window 14
 - OPEN button 19
 - Options menu 11
 - Pause button 14
 - PLAY button 14
 - playlist controls 14
 - PREV and NEXT buttons 14
 - Quickstart 9

- Radio 17
- Radio window 17
- REC button 16
- Recorder window 14, 16
- recording quality level 12, 13
- REFRESH button 16
- registration 9
- SAVE button 19
- save CD tracks 15, 16
- search for music 11
- Security feature 25
- set basic preferences 10, 11
- STOP button 14
- track information window 14
- transfer music files 21, 22
- VOLUME control 14

O

- Optional accessories 52

P

- Pause button 37, 38, 40
- Pause feature 38, 43
- Phones jack 36, 38
- PLAY button 37, 38, 40, 41
- Player features 37, 38
- Precautions for CompactFlash card 3
- Preset memory 48
- PROGRAM feature 46

Index

R

- Radio mode 48
- RealJukebox
 - basic controls 26
 - CompactFlash card 32
 - continuous play button 26
 - create an autoplaylist 30
 - create a playlist 29
 - download music from the Internet 28
 - eject button 26
 - email address 23
 - install 8, 23
 - Lyra2 CD Music window 32
 - next button 26
 - organize your playlist 29
 - pause button 26
 - play button 26
 - previous button 26
 - progress bar 26
 - radio 31
 - record button 26
 - recording preference 24, 25
 - saving CD tracks on CD or Lyra2 26
 - search 30
 - set basic preferences 24
 - shuffle play button 26
 - stop button 26
 - track information 27, 28
 - transfer files to CompactFlash card 32
- Recall button 37, 38
- Remote Control 40
- Removable belt clip 50
- REPEAT 1 feature 45
- REPEAT ALL feature 45
- REPEAT ALL PROGRAM feature 45
- REPEAT ALL SHUFFLE feature 45

S

- Scroll feature 44
- Search feature 42, 44, 48
- SELECT/VOLUME control 37, 39, 40, 41, 42, 43
- SHUFFLE feature 45
- SKIP/FOR. (forward) button 37, 38, 40, 41, 42, 44, 45
- SKIP/REV. (reverse) button 37, 39, 41, 42, 44, 45
- Software CD 6
- Software setup program 6
- Specifications 54
- STOP•OFF button 16, 37, 39, 40, 49
- Suppressing stereo signal 49

T

- Table of contents 1, 2
- Troubleshooting guide 54

U

- Unpack the player 5
- USB drivers, install 7
- User's guide installation in PC 34

V

- Volume level 37, 39, 40

W

- Warnings 3
- Warranty, limited (for Canada) 57
- Warranty, limited (for US) 55, 56
- WAV audio 13
- Windows Media 13

Thomson multimedia Inc.

10330 N. meridian St.
Indianapolis, IN 46290
©2001 Thomson multimedia Inc.
Trademark(s) © Registered
Marca(s) © Registrada(s)
Marque(s) © Déposée(s)
55136870 (EN)
www.rca.com